



# September

Monthly Activity Calendar– 5 Day Afternoon Class  
 Our Science Unit is **“Discovery Unit”**

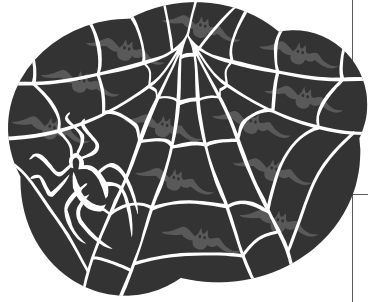
<i>Sunday</i>	<i>Monday</i>	<i>Tuesday</i>	<i>Wednesday</i>	<i>Thursday</i>	<i>Friday</i>	<i>Saturday</i>
				1	2	3
4	5	6	7 1st Day of School (new Students only) 1230:1245 2:15-2:30pm	8 2nd Day of School (both classes) 1230:1245 2:15-2:30pm	9 3rd Day of School (both classes) 1230:1245 2:15-2:30pm	10
11	12  Sound	13  of	14  the	15  week	16 Show & Tell  “a”	17
18	19  Sound	20  of	21  the	22 Kindermusik  week	23 Show & Tell  “b”	24
25	26  Sound	27 Quiet Heart 1230-115pm  of	28 ART  the	29  week	30 Show & Tell  “c”	



# October


Monthly Activity Calendar-5 Day Afternoon Class  
 Our Science Unit is “Native Americans”

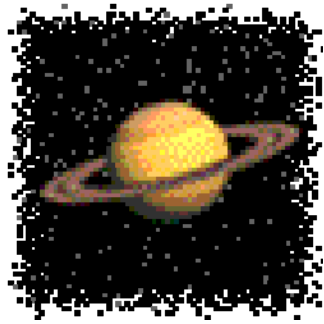
Sunday	Monday	Tuesday	Wednesday	Thursday	Friday	Saturday
						1
2	3 Sound	4 of	5 the	6 Field Trip Hands On Pumpkin Patch 1-3pm week	7 Show & Tell “d”	8
9	10 Sound	11 Quiet Heart 130-215pm of	12 the	13 week	14 Show & Tell “e”	15
16	17 Sound	18 of the	19 week	20 Show & Tell “f”	21 No School Teacher In service	22
23	24 Sound 5 day Kinder musik	25 Quiet Heart 130-215pm of	26 ART the	27 Halloween Party week	28 Show & Tell “g”	29
	30	31				



# November


Monthly Activity Calendar-5 Day Afternoon Class  
Our Science Unit is “Spiders”

<i>Sunday</i>	<i>Monday</i>	<i>Tuesday</i>	<i>Wednesday</i>	<i>Thursday</i>	<i>Friday</i>	<i>Saturday</i>
		<b>1 PJ Day!</b>	<b>2</b>	<b>3 Picture Day</b>	<b>4 Show &amp; Tell</b>	<b>5</b>
	<b>Sound</b>	<b>of</b>	<b>the</b>	<b>week</b>	<b>5</b> <b>“h”</b>	
<b>6</b>	<b>7</b>	<b>8 Quiet Heart</b> 130-215pm	<b>9</b>	<b>10</b>	<b>11 Show &amp; Tell</b>	<b>12</b>
	<b>Sound</b>	<b>of</b>	<b>the</b>	<b>week</b>	<b>“f”</b>	
<b>13</b>	<b>14</b>	<b>15</b>	<b>16</b>	<b>17</b>	<b>18 Show &amp; Tell</b>	<b>19</b>
	<b>Sound</b>	<b>of</b>	<b>the</b>	<b>week</b>	<b>“j”</b>	
<b>20</b>	<b>21</b>	<b>22 Quiet Heart</b> 130-215pm	<b>23 Thanksgiving Celebration</b> 1130-1145 dismissal 	<b>24 No School Thanksgiving Break</b>	<b>25 No School Thanksgiving Break</b>	<b>26</b>
	<b>Sound</b>	<b>of</b>				
<b>27</b>	<b>28</b>	<b>29</b>	<b>30</b>		<b>Show &amp; Tell</b>	
	<b>the</b>	<b>week</b>	<b>“k”</b>	<b>“k”</b>	<b>k</b>	



# December

Monthly Activity Calendar –5 Day Afternoon Class  
 Our Science Unit is “Solar System”

<i>Sunday</i>	<i>Monday</i>	<i>Tuesday</i>	<i>Wednesday</i>	<i>Thursday</i>	<i>Friday</i>	<i>Saturday</i>
	<b>Sound</b>	<b>of</b>	<b>the</b>	<b>1</b> <b>week</b>	<b>2 Show &amp; Tell</b> <b>“k”</b>	<b>3</b>
<b>4</b>	<b>5</b> <b>Sound</b>	<b>6</b> <b>of</b>	<b>7</b> <b>the</b>	<b>8</b> <b>week</b>	<b>9 Show &amp; Tell</b> <b>“q”</b> <b>Holiday Party</b>  <b>530-730</b>	<b>10</b>
<b>11</b>	<b>12</b> <b>Sound</b>	<b>13</b> <b>of</b>	<b>14</b> <b>the</b>	<b>15</b> <b>week “m”</b>	<b>16 Tentiave</b> <b>Field Trip</b> <b>Olympic Ballet</b> <b>“The Nutcracker”</b>	<b>17</b>
<b>18</b>	<b>19 No School</b> <b>Winter Break</b>	<b>20 No School</b> <b>Winter Break</b>	<b>21 No School</b> <b>Winter Break</b>	<b>22 No School</b> <b>Winter Break</b>	<b>23 No School</b> <b>Winter Break</b>	<b>24</b>
<b>25</b>	<b>26 No School</b> <b>Winter Break</b>	<b>27 No School</b> <b>Winter Break</b>	<b>28 No School</b> <b>Winter Break</b>	<b>29 No School</b> <b>Winter Break</b>	<b>30 No School</b> <b>Winter Break</b>	<b>31</b>



# January

Monthly Activity Calendar-5 Day Afternoon Class  
 Our Science Unit is “**Solar System**”

<i>Sunday</i>	<i>Monday</i>	<i>Tuesday</i>	<i>Wednesday</i>	<i>Thursday</i>	<i>Friday</i>	<i>Saturday</i>
1	2 Welcome Back  Sound	3  of	4  the	5  week	6 Show & Tell  “n”	7
8	9  Sound	10  of	11  the	12  week	13 Show & Tell  “o”	14
15	16 No School MLK Day	17 No School Teacher Inservice	18 Early Release 2:30pm Parent Conf. 3-6pm	19 Early Release 2:30pm Parent Conf. 3-6pm	20 Early Release 2:30pm Parent Conf. 3-6pm	21
22	23  Sound	24  of	25  the	26  week	27 Show & Tell  “p”	28
29	30  Sound	31  of	the	week	“q”	



# February

Monthly Activity Calendar-5 Day Afternoon Class  
 Our Science Unit is “The Body”

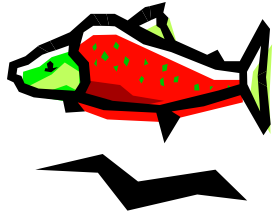
<i>Sunday</i>	<i>Monday</i>	<i>Tuesday</i>	<i>Wednesday</i>	<i>Thursday</i>	<i>Friday</i>	<i>Saturday</i>
	<b>Sound</b>	<b>of</b>	<b>1</b>  <b>the</b>	<b>2</b>  <b>week</b>	<b>3</b> <b>Show &amp; Tell</b> <b>“r”</b>	<b>4</b>
<b>5</b>	<b>6</b>  <b>Sound</b>	<b>7</b>  <b>of</b>	<b>8</b>  <b>the</b>	<b>9</b>  <b>week</b>	<b>10 Mad Science</b> <b>In class field trip</b> <b>1245-130</b> <b>Show &amp; Tell</b> <b>“s”</b>	<b>11</b>
<b>12</b>	<b>13</b>  <b>Sound</b>	<b>14 Quiet Heart</b> <b>130-215pm</b> <b>Valentine’s</b> <b>Exchange</b> <b>of</b>	<b>15</b>  <b>the</b>	<b>16</b>  <b>week</b>	<b>17 Show &amp; Tell</b>  <b>“t”</b>	<b>18</b>
<b>19</b>	<b>20 No School</b> <b>President’s</b> <b>Holiday</b>	<b>21 No School</b> <b>President’s</b> <b>Holiday</b>	<b>22</b>  <b>Sound of</b>	<b>23</b>  <b>the week</b>	<b>24 Show &amp; Tell</b>  <b>“u”</b>	<b>25</b>
<b>26</b>	<b>27</b>  <b>Sound</b>	<b>28</b>  <b>of</b>	<b>29</b>  <b>the</b>	<b>week</b>	<b>Show &amp; Tell</b>  <b>“u &amp; v”</b>	



# March

Monthly Activity Calendar-5 Day Afternoon Class  
 Our Science Unit is “Safety”

<i>Sunday</i>	<i>Monday</i>	<i>Tuesday</i>	<i>Wednesday</i>	<i>Thursday</i>	<i>Friday</i>	<i>Saturday</i>
	<b>Sound</b>	<b>of</b>	<b>the</b>	<b>1</b> <b>week</b>	<b>2 Show &amp; Tell</b>  <b>u &amp; v</b>	<b>3</b>
<b>4</b>	<b>5</b> <b>Sound</b>	<b>6 Quiet Heart</b> <b>130-215pm</b> <b>of</b>	<b>7</b> <b>the</b>	<b>8</b> <b>week</b>	<b>9 Show &amp; Tell</b>  <b>“w”</b>	<b>10</b>
<b>11</b>	<b>12</b> <b>Sound</b>	<b>13</b> <b>of</b>	<b>14</b> <b>the</b>	<b>15</b> <b>week ‘x’</b>	<b>16 No School</b> <b>Teacher</b> <b>In service</b>	<b>17</b>
<b>18</b>	<b>19</b> <b>Sound</b>	<b>20 Quiet Heart</b> <b>130-215pm</b> <b>of</b>	<b>21</b> <b>the</b>	<b>22</b> <b>week</b>	<b>23 Show &amp; Tell</b>  <b>“ x&amp; y”</b>	<b>24</b>
<b>25</b>	<b>26</b> <b>Sound</b>	<b>27</b> <b>of</b>	<b>28</b> <b>the</b>	<b>29</b> <b>week</b>	<b>30 Show &amp; Tell</b>  <b>“z”</b>	<b>31</b>



# April

Monthly Activity Calendar-5 Day Afternoon Class  
 Our Science Unit is “**Salmon**”

<i>Sunday</i>	<i>Monday</i>	<i>Tuesday</i>	<i>Wednesday</i>	<i>Thursday</i>	<i>Friday</i>	<i>Saturday</i>
1	2 No School Spring Break	3 No School Spring Break	4 No School Spring Break	5 No School Spring Break	6 No School Spring Break	7
8	9  Sound	10  of	11  the	12  week	13 Show & Tell  “a”	14
15	16  Sound	17  of	18  the	19  week	20 Show & Tell  “e”	21
22	23  Sound	24  of	25  the	26  week	27 Show & Tell  “I”	28
29	30 Parent Observations  Sound	of	the	week	Show & Tell  “o”	



# May

## Monthly Activity Calendar-5 Day Afternoon Class Our Science Unit is “Frogs”

<i>Sunday</i>	<i>Monday</i>	<i>Tuesday</i>	<i>Wednesday</i>	<i>Thursday</i>	<i>Friday</i>	<i>Saturday</i>
	<b>Sound</b>	<b>1 Parent Observations</b> <b>Quiet Heart</b> <b>130-215pm</b> <b>of</b>	<b>2 Parent Observations</b>  <b>the</b>	<b>3 Parent Observations</b>  <b>week</b>	<b>4 Parent Observations</b>  <b>Show &amp; Tell</b> <b>“o”</b>	<b>5</b>
<b>6</b>	<b>7 Parent Observations</b>  <b>Sound</b>	<b>8 Parent Observations</b>  <b>of</b>	<b>9 Parent Observations</b>  <b>the</b>	<b>10</b>  <b>week “u”</b>	<b>11 No School</b> <b>Teacher</b> <b>In service</b>	<b>12</b>
<b>13</b>	<b>14</b>  <b>Sound</b>	<b>15 Quiet Heart</b> <b>130-215pm</b>  <b>of</b>	<b>16</b>  <b>the</b>	<b>17</b>  <b>week</b>	<b>18 Show &amp; Tell</b> <b>“u &amp; y”</b>	<b>19</b>
<b>20</b>	<b>21</b>  <b>Sound</b>	<b>22</b>  <b>of</b>	<b>23</b>  <b>the</b>	<b>24</b>  <b>week</b>	<b>25 Show &amp; Tell</b> <b>“y”</b>	<b>26</b>
<b>27</b>	<b>28 No School</b> <b>Memorial</b> <b>Day</b>	<b>29 Quiet Heart</b> <b>130-215pm</b>  <b>Sound of</b>	<b>30</b>  <b>the</b>	<b>31</b>  <b>week</b>	<b>“favorite”</b>	



# June

Monthly Activity Calendar-5 Day Afternoon Class  
 Our Science Unit is **“Frogs”**

<i>Sunday</i>	<i>Monday</i>	<i>Tuesday</i>	<i>Wednesday</i>	<i>Thursday</i>	<i>Friday</i>	<i>Saturday</i>
					<b>1 Show &amp; Tell</b>	<b>2</b>
		<b>Sound of</b>	<b>the</b>	<b>week</b>	<b>“favorite”</b>	
<b>3</b>	<b>4</b>	<b>5</b>	<b>6</b>	<b>7 Deer Creek Fish Hatchery 10am- Noon</b>	<b>8 Grad Party 9am-1030am</b>	<b>9</b>